

SIMPATICO PLUSCOORDINATES



MUM - Repeat: 5.5" H, 3" V



SOJOURN - Repeat: 4.5" H, 4.25" V



SOURCE - Repeat: 7.25" H, 7.25" V



TENDRIL - Repeat: 14.125" H, 15" V

PATTERNS AVAILABLE WITH DURABLOCK™ (to order, please use the below numbers) - *color shown on card

AMULET

DB400-001 Merlot*
DB400-002 Chamois*
DB400-003 Limelight*
DB400-004 Indigo
DB400-005 Cloak
DB400-007 Sandstone*
DB400-009 Persimmon*
DB400-014 Just Blue*

DESTINY

DB405-001 Fiesta*
DB405-003 Meadow
DB405-004 Sapphire
DB405-005 Wildberry*
DB405-006 Granite*
DB405-007 Beachcomber*
DB405-009 Pumpkin
DB405-013 Celadon*
DB405-014 Capri
DB405-019 Bronze
DB405-024 Azure*

GENESIS

DB408-000 Truffle*
DB408-001 Firestorm*
DB408-002 Wheat*
DB408-003 Jade
DB408-004 Twilight
DB408-006 Lava*
DB408-007 Quartz
DB408-008 Confetti
DB408-009 Topaz*
DB408-013 Pear*
DB408-014 Atlantic*
DB408-016 Greystone

MOSAIC

DB406-000 Espresso*
DB406-001 Blaze*
DB406-002 Caramel
DB406-003 Laurel*
DB406-004 Cerulean
DB406-005 Berry*
DB406-007 Natural
DB406-009 Mango
DB406-010 Taupe
DB406-013 Spring
DB406-014 Dusk*

MUM

DB401-003 Green Tea*
DB401-004 Cyan*
DB401-007 Parchment
DB401-009 Persimmon*
DB401-019 Mango

SEQUEL

DB409-000 Mocha*
DB409-001 Crimson*
DB409-002 Wheat*
DB409-003 Ivy
DB409-004 Royal*
DB409-006 Ebony*
DB409-007 Biscuit*
DB409-009 Paprika*
DB409-011 Port*
DB409-013 Wasabi*
DB409-014 Navy
DB409-016 Sandstone
DB409-017 Khaki
DB409-019 Chili
DB409-023 Citrus*
DB409-024 Marine
DB409-027 Parchment*
DB409-029 Saffron*
DB409-033 Pesto
DB409-043 Juniper*

SOJOURN

DB402-003 Green Tea
DB402-004 Just Blue
DB402-005 Cloak*
DB402-006 Midnight
DB402-007 Alabaster*
DB402-009 Poppy*
DB402-014 Mist
DB402-019 Mango

SOURCE

DB407-002 Jonquil
DB407-003 Fern*
DB407-004 Oasis*
DB407-005 Magenta
DB407-006 Ebony*
DB407-007 Alabaster*
DB407-008 Plum*
DB407-009 Tabasco*
DB407-014 Aqua

TENDRIL

DB403-000 Latte*
DB403-002 Chamois*
DB403-003 Green Tea*
DB403-004 Indigo
DB403-007 Sand
DB403-009 Copper*
DB403-014 Ice Blue

VALOR

DB404-002 Chamois
DB404-003 Green Tea
DB404-004 Indigo
DB404-006 Midnight*
DB404-007 Alabaster*
DB404-009 Persimmon*
DB404-014 Mist*
DB404-019 Mango*

DURABLOCK™ INFORMATION - All fabric patterns on this card are stocked with DuraBlock™ and can be ordered from inventory by the yard. Please use the DuraBlock™ number listed above.

Same "Features and Benefits" of Nano-Tex® plus the following:

- Durable, Breathable Barrier**
 - Prevents liquid or contaminant from reaching cushion
 - Breathability offers comfort for extended seating periods compared to vinyl and polyurethanes
 - Leaves fabric soft and moldable for upholstery applications
- Environmentally Friendly**
 - 100% antimony-free polyester is completely recyclable

CLEANING INFORMATION

S: Solvent - Spot clean using a mild water-free solvent or dry cleaning product. Clean only in a well-ventilated room and avoid any product containing carbon tetrachloride or other toxic materials. Pretest a small area before proceeding.

WS: Water/Solvent Cleaner - Spot clean, with a mild solvent, an upholstery shampoo, or the foam from a mild detergent. When using a solvent or dry cleaning product, follow instructions carefully and clean only in a well-ventilated room. Avoid any product that contains carbon tetrachloride or other toxic materials. With either method, pretest a small area before proceeding.

For detailed care and cleaning information for each pattern, please refer to the Mayer Fabrics web site or contact customer service.

DURANGO SPECIFIC TREATMENTS

PreFix® Protective Finish Anti-Microbial/Anti-Bacterial Protection Anti-Stain Finish/Easily Cleaned Anti-Static Slip Finish Urine Stain Resistant Mildew Resistant Backing and Face Superior Disinfectant Resistance Oil Resistant Sulfide Stain Resistant/All Colors UV Stabilized Pigments

PreFix® The first protective finish that starts where other finishes finish. With PreFix® protection, it is possible to remove stains that could never be removed before. Now, with cost-proven stain resistance and cleanability, plus superior abrasion resistance, PreFix® protected vinyls protect you from high maintenance and frequent reupholstery costs.

TECHNICAL INFORMATION

Simpatico Plus Coordinates

* All Fabrics are Grade "K"

* ACT® Registered Certification Marks

Pattern 54*	Fiber Content and Backing (Pre C. = Consumer)	GREENGUARD	Weight/Linear Yd	Pattern Repeat	Finish	Abrasion Wyzenbeek	Light Fastness	Flammability	Cleaning Code
AMULET Directional	58% Cotton, 42% Polyester Latex Backing (also available with DuraBlock™ barrier)	Yes	13.04 oz.	1.125" H 1.125" V	Nano-Tex®	30,000 Double Rubs	60 hours	Cal. 117-E NFPA 260 (Equiv. to UFAC)	S
DESTINY Directional Shown Railroaded	54% Cotton, 46% Polyester Latex Backing (also available with DuraBlock™ barrier)	Yes	13.34 oz.	2.25" H 0" V	Nano-Tex®	50,000 Double Rubs	40 hours	Cal. 117-E NFPA 260 (Equiv. to UFAC)	S
DURANGO	100% Vinyl 100% Knit Polyester Backing	No	30 oz.	None	PreFix®	1,000,000 Double Rubs	72 hours	Cal. 117-E NFPA 260 (Equiv. to UFAC) FMVSS 302	WS
GENESIS Directional	54% Cotton, 46% Polyester Latex Backing (also available with DuraBlock™ barrier)	Yes	11.964 oz.	Non-matching	Nano-Tex®	100,000 Double Rubs	40 hours	Cal. 117-E NFPA 260 (Equiv. to UFAC)	S
MOSAIC Directional	57% Cotton, 43% Polyester Latex Backing (also available with DuraBlock™ barrier)	Yes	12.84 oz.	14.375" H 13.25" V Random Match	Nano-Tex®	100,000 Double Rubs	40 hours	Cal. 117-E NFPA 260 (Equiv. to UFAC)	S
MUM Directional	58% Cotton, 42% Polyester Latex Backing (also available with DuraBlock™ barrier)	Yes	13.04 oz.	6.5" H 3" V	Nano-Tex®	78,000 Double Rubs	60 hours	Cal. 117-E NFPA 260 (Equiv. to UFAC)	S
SEQUEL Directional	100% Polyester (also available with DuraBlock™ barrier)	Yes	11.6 oz.	None	Nano-Tex®	288,000 Double Rubs	60 hours	Cal. 117-E NFPA 260 (Equiv. to UFAC)	S
SOJOURN Directional	58% Cotton, 42% Polyester Latex Backing (also available with DuraBlock™ barrier)	Yes	13.04 oz.	4.5" H 4.25" V	Nano-Tex®	50,000 Double Rubs	60 hours	Cal. 117-E NFPA 260 (Equiv. to UFAC)	S
SOURCE Directional	58% Cotton, 42% Polyester Latex Backing (also available with DuraBlock™ barrier)	Yes	13.4 oz.	7.25" H 7.25" V	Nano-Tex®	50,000 Double Rubs	40 hours	Cal. 117-E NFPA 260 (Equiv. to UFAC)	S
TENDRIL Directional	54% Cotton, 46% Polyester Latex Backing (also available with DuraBlock™ barrier)	Yes	11.8 oz.	14.125" H 15" V	Nano-Tex®	99,000 Double Rubs	60 hours	Cal. 117-E NFPA 260 (Equiv. to UFAC)	S
VALOR Directional	58% Cotton, 42% Polyester Latex Backing (also available with DuraBlock™ barrier)	Yes	13.04 oz.	2.75" H 3.337" V	Nano-Tex®	30,000 Double Rubs	60 hours	Cal. 117-E NFPA 260 (Equiv. to UFAC)	S

All patterns may comply with California Technical Bulletin 133 when combined with appropriate components.

FEATURES AND BENEFITS OF NANO-TEX®

Spill/Stain Prevention

- Fabric aggressively repels liquids (liquid beads and rolls off)
- Liquids can be blotted off the fabric face preventing staining and penetration
- Helps prevent staining of fabric from dirt and spills, including hot coffee, mustard, salad dressing, blood, urine, and iodine
- Can be cleaned with detergents, solvents, or bleach (fabric appropriate)

Performance

- Maintains natural hand
- Highly breathable
- Permanent

Environmentally Friendly

- Nano-Tex® is an environmentally friendly chemistry that is recyclable

REDUCED ENVIRONMENTAL IMPACT

GREENGUARD Indoor Air Quality Certification requires products to meet some of the world's toughest chemical emissions standards. GREENGUARD Children & Schools Certification requires those products to meet or exceed additional criteria, including CA Section 01350, to account for the unique health sensitivities of children.

ADDITIONAL INFORMATION

Additional colors are available. Please contact Mayer Fabrics for more information.
Custom Capabilities: All patterns can be custom colored. Minimum yardage applies.
Memo Samples: Please keep this card intact. Memo samples can be ordered on our web site or by contacting customer service.
Color Matching: Mayer Fabrics always attempts to ship a satisfactory commercial match. Because of industry standard dye lot variation, colors may not match exactly.
Specifications: Specifications are correct at the time of printing. Current specifications are available on our website.
For information or assistance with products or services, call us at 800.428.4415 or refer to our web site, www.mayerfabrics.com.



Railroaded: This feature allows reduction of seams and enables smoother furniture tailoring.



Fabric "up the roll" or "regular" position



Fabric "railroaded" or "top selvage" position

All railroaded patterns should be upholstered as shown on card.

GSA Contract #GS-28F-0022P

SIMPLUSCCD 51110

† 317.267.2626 or 800.428.4415 ‡ 317.267.2629 or 877.7SAMPLE

www.mayerfabrics.com ©2010 Mayer-Paetz, Inc.

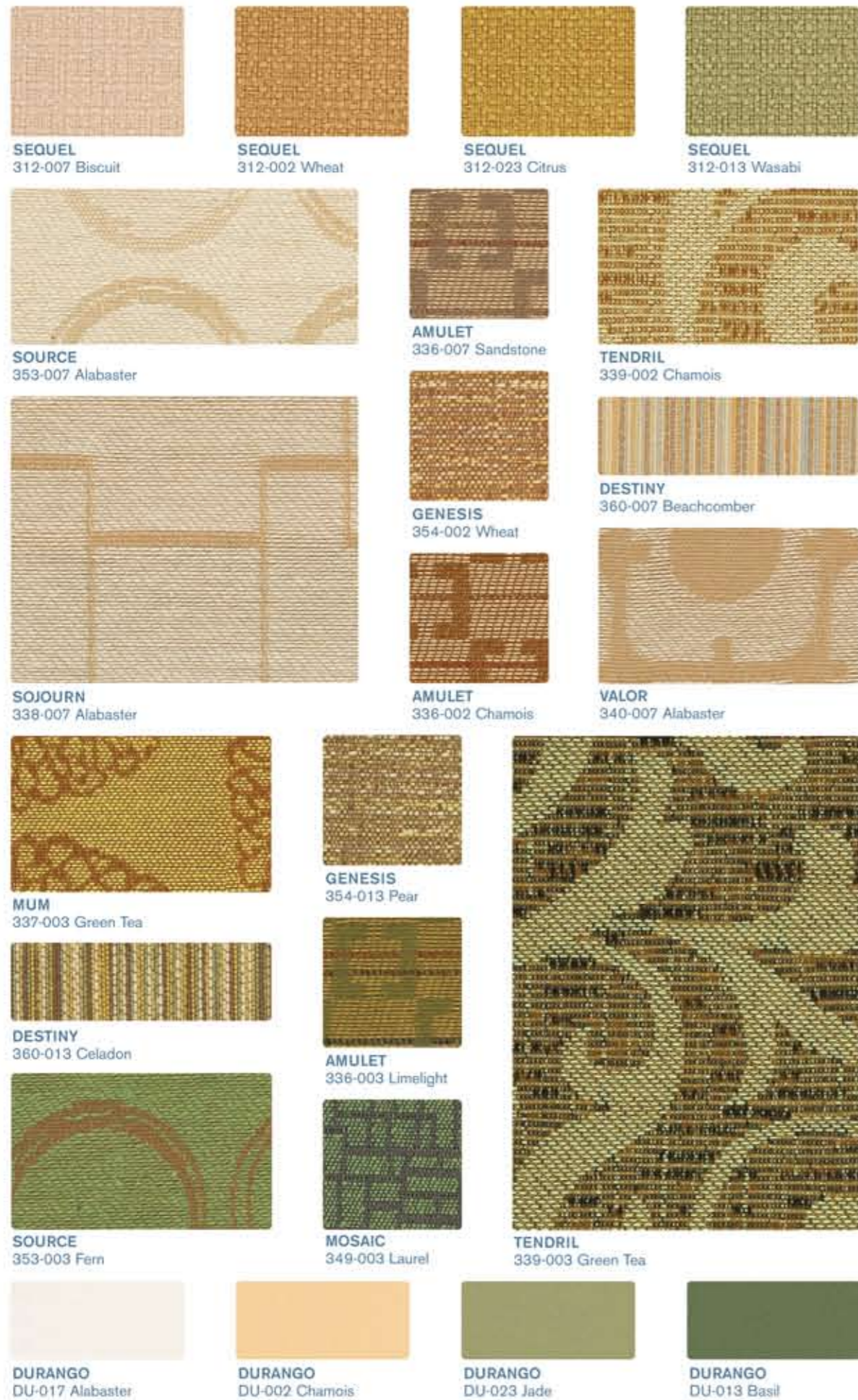


MAYERFABRICS

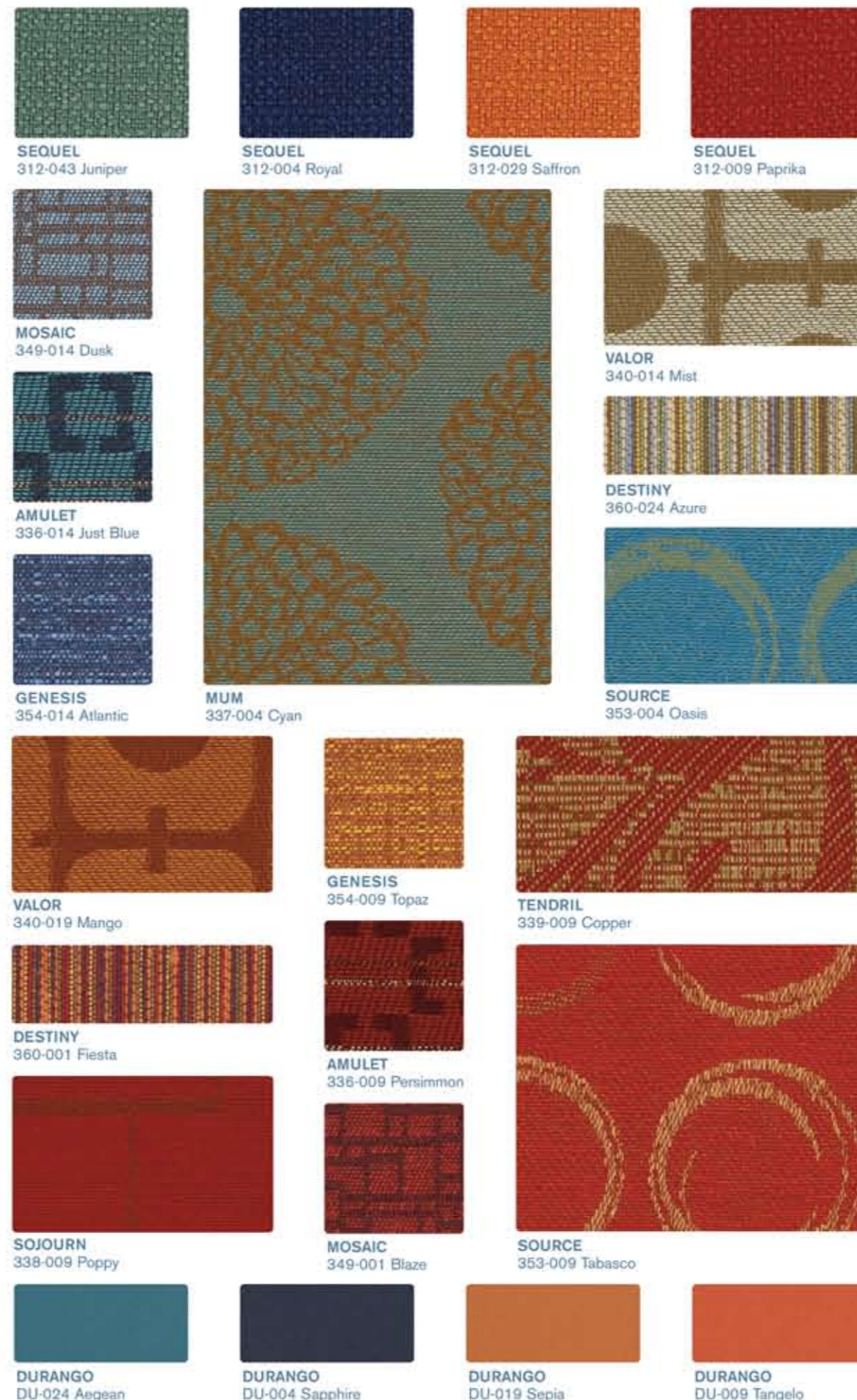


MAYERFABRICS

Simpatico Plus Coordinates (L)



Simpatico Plus Coordinates (M)



Simpatico Plus Coordinates (R)

